

EMT Strap Two Hole Type

Steel

ELECMAN® steel EMT two-hole strap is a galvanized steel fastener used to secure Electrical Metallic Tubing (EMT) conduit to walls, ceilings, or structural surfaces. It differs from a one-hole strap by having two mounting holes, which provide enhanced stability and load-bearing capacity.

Type:

Two hole

Material:

Steel

Surface Finish:

Zinc plated

Certification & Standard

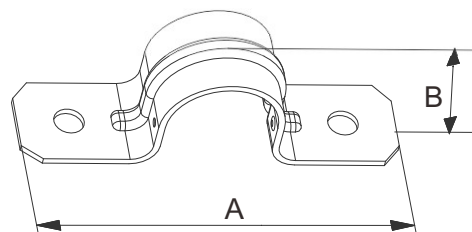
Manufactured to Underwriters Laboratory
Safety Standards UL 514B

UL File No.: E541187



Dimensions:

The dimensions of EMT straps two hole type are as indicated in Table 1.



Tabel 1 - Dimensions of EMT straps two hole type

Catalog Number	Trade Size		Thickness	Dim A		Dim B
	in.	mm	mm	in.	in.	
EST050	1/2"	16	0.80	2.25	0.70	
EST075	3/4"	21	0.80	2.75	0.92	
EST100	1"	27	0.80	3.00	1.16	
EST125	1-1/4"	35	1.00	3.75	1.51	
EST150	1-1/2"	41	1.00	4.25	1.74	
EST200	2"	53	1.20	4.81	2.21	
EST250	2-1/2"	63	1.80	5.87	1.43	
EST300	3"	78	1.80	6.50	1.75	
EST350	3-1/2"	91	1.80	7.12	2.00	
EST400	4"	103	1.80	7.75	2.25	